

MAKE SURE TRAILERS ARE 100' OR LESS APART



ENSURE SUPPORT TRAILER IS ORIENTED NORTH

MAKE SURE IS ORIENTED NORTH LEVEL AND ALL OUT RIGGERS OUT AND SECURE





MAKE SURE SAFETY PINS ARE INSERTED ON EXTENDED OUTRIGGERS





EXTEND MAST AND SECURE & INSTALL ROTOR, ORIENT IT NORTH, INSTALL ROPE ON YARD ARM FOR G5RV

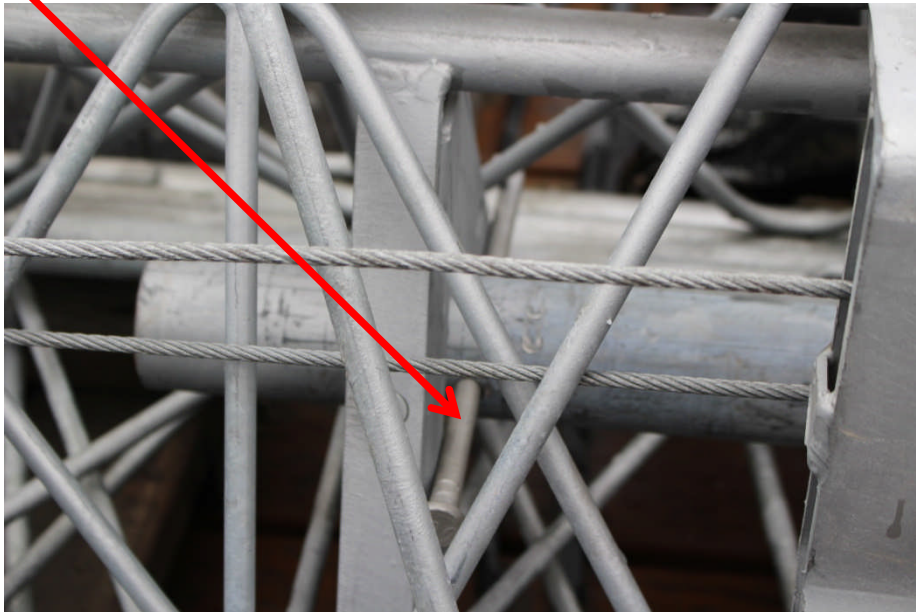
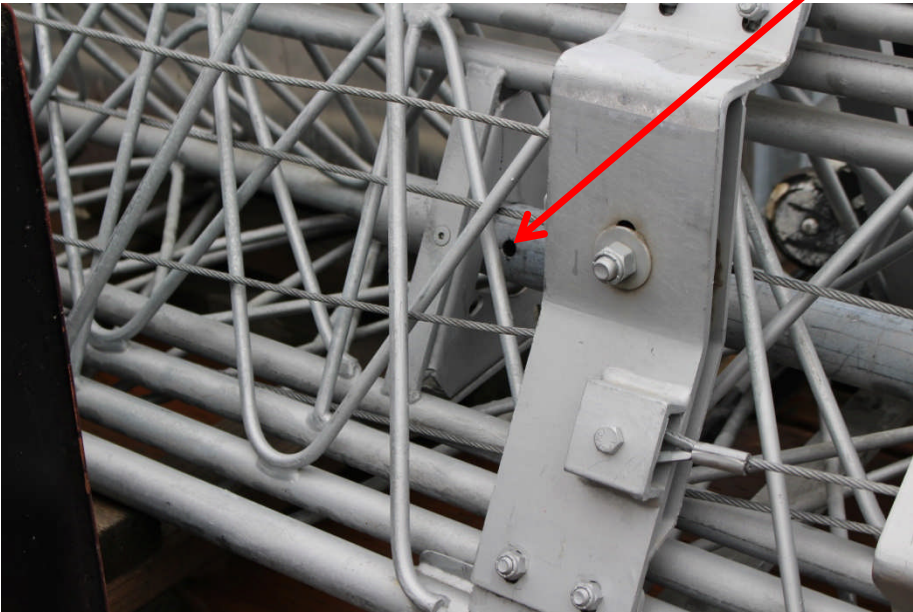


ASSEMBLE BEAM



MAKE SURE LADDER IS SECURE & STABLE

**EXTEND MAST AND SECURE & INSTALL ROTOR, ORIENT IT NORTH, INSTALL ROPE ON YARD ARM FOR G5RV
INSTALL TNT MAST SAFETY BOLT DEVICE**





RAISE BEAM WITH DIRECTOR DOWN WITH BACK OF TRAILER ORIENTED NORTH



MAKE SURE THE CABLE LOOP IS CORRECT AND SECURE TO TOWER

PLACE SPACER NUTS ON ROTOR CLAMP





MAKE SURE SAFETY PINS ARE SECURED ON BASE OF TOWER

LAY OUT POWER CABLE INSERT SPIDER BOX AS NEEDED





PLACE SAFETY CONES OR ENG TAPE AS NEEDED



MAKE SURE FILTER SHUT OFF IS ON, BREAKERS ARE OFF AND POWER CABLE CONNECTED



MAKE SURE FIRE EXTINGUISHER IS ACCESSABLE

Do not start generator until tower and Cables are all installed, secured and layed out, for noise discipline.

Make sure Comm Center gives the ok To start the generator

EXTEND TOWER AND SECURE CABLES

